



WAGATE® GATE VALVE

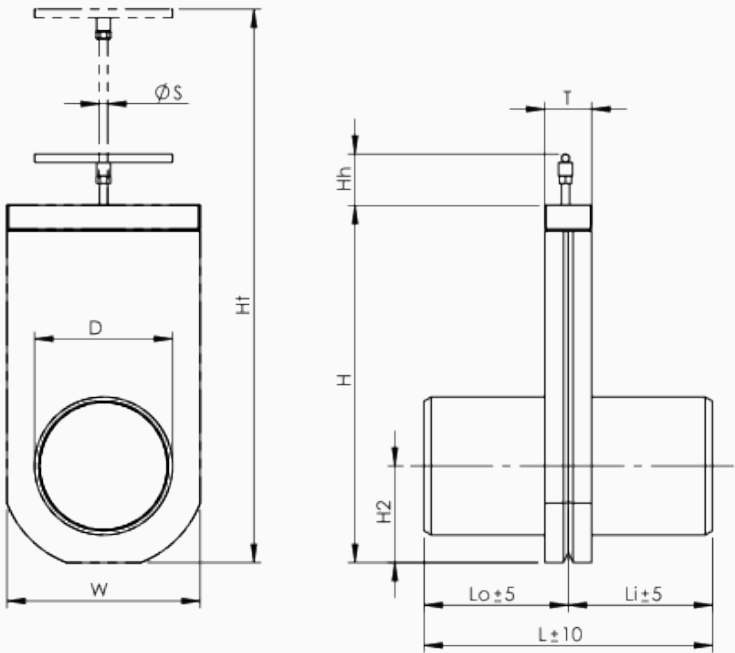
RVL GATE VALVE

WaGate gate valves can be installed inline on stormwater and wastewater networks. The most common applications are to isolate run-off from roads in the case of accidents, or close off incoming flow in pumping stations during maintenance.

WAPRO RVL sliding gate for bidirectional fluid pressure. The valve is designed using two lipped O-ring seals so it is watertight to two sides. The valve has full through-flow during closing and has the same construction as the WAPRO SVL, but without the pocket function. The sliding valve is an on/off valve for manual operation via a lever that can be kept in the open position. WAPRO RVL valve can be incorporated in the pipeline in and outside manhole systems, with construction using levers and HDPE protection pipes for build-up that pass through the manhole cover. The valve is suitable for installation in the ground without protection because its chamber is made of corrosion-free materials. Areas of use: Surface water, industrial water and clean-water projects with few impurities Variety of actuation options are available ie. manual, electric, pneumatic or hydraulic.

Materials

Fasteners mtrl.	EN 1.4404
Gasket Mtrl.	EPDM
Knife Mtrl.	EN 1.4404
Operating Rod mtrl.	EN 1.4404
Reinforcement Mtrl.	EN 1.4404
Valve Body Mtrl.	PE



Product Data

Name	D [mm]	H [mm]	L [mm]	T [mm]	W [mm]	H2 [mm]	Hh [mm]	Ht [mm]	Li [mm]	Lo [mm]	ØS [mm]	Weight [kg]	Missing Title en_gb [bar]
RVL 110	110	245	348	68	192	96	66		174	174	12	4.7	2
RVL 125	125	266	347	68	208	103	66		174	174	12	5.7	2
RVL 160	160	443	368	68	243	122	66		184	184	12	7.7	2
RVL 200	200	518	400	68	280	135	66		209	209	12	10	1
RVL 250	250	618	400	68	330	165	66	944	234	234	12	13.3	1
RVL 315	315	746	600	78	395	195	66	1135	314	314	12	23	1