

WAGATE® GATE VALVE

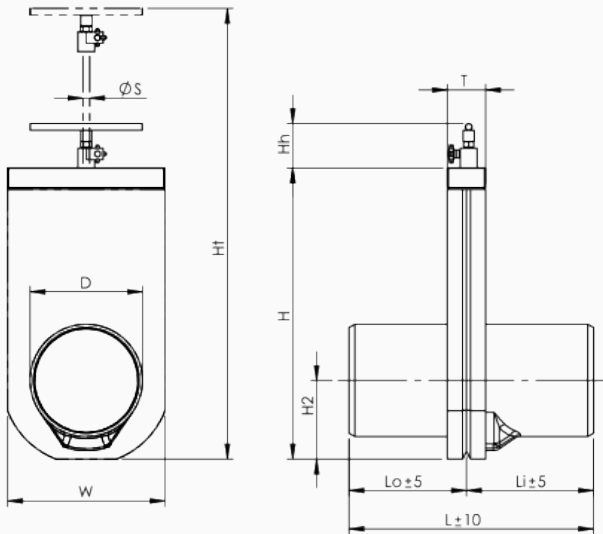
SVL GATE VALVE

WaGate gate valves can be installed inline on stormwater and wastewater networks. The most common applications are to isolate run-off from roads in the case of accidents, or close off incoming flow in pumping stations during maintenance.

WAPRO SVL sliding valve for unidirectional fluid pressure. The valve is designed with full through-flow and with a self-cleansing pocket function for impurities to prevent total closure of the valve plate. The top of the valve can be removed for inspections. The lipped O-ring seal to the steel plate can be changed in larger valves. The WAPRO SVL valve serie has a long operating life, can be connected to piping using mechanical or electrofusion fittings flanges, or butt-welded in open terrain. The sliding valve is an on/off valve for manual operation via a lever that can be kept in the open position. WAPRO SVL valve can be incorporated in the pipeline in and outside manhole systems, with construction using levers and HDPE protection pipes for build-up that pass through the manhole cover. The valve is suitable for installation in the ground without protection because its chamber is made of corrosion-free materials. Areas of use: Surface water, effluent, industrial water and in the fish-farming and agricultural industries

Materials

| | |
|---------------------|---------------------------|
| Fasteners mtrl. | EN 1.4404 |
| Gasket Mtrl. | EPDM |
| Knife Mtrl. | Duplex SAF 2205/EN 1.4404 |
| Operating Rod mtrl. | Duplex SAF 2205/EN 1.4404 |
| Valve Body Mtrl. | PE |



Product Data

| Name | D [mm] | H [mm] | L [mm] | T [mm] | W [mm] | H2 [mm] | Hh [mm] | Ht [mm] | Li [mm] | Lo [mm] | ØS [mm] | Weight [kg] | Missing Title en_gb [bar] |
|---------|--------|--------|--------|--------|--------|---------|---------|---------|---------|---------|---------|-------------|---------------------------|
| SVL 110 | 110 | 342 | 343 | 68 | 192 | 97 | 66 | 536 | 169 | 174 | 12 | 4.7 | 2 |
| SVL 125 | 125 | 369 | 358 | 68 | 208 | 103 | 66 | 573 | 184 | 174 | 12 | 5.7 | 2 |
| SVL 160 | 160 | 443 | 388 | 68 | 243 | 122 | 66 | 687 | 204 | 184 | 12 | 7.7 | 2 |
| SVL 200 | 200 | 518 | 435 | 68 | 280 | 165 | 66 | 803 | 226 | 209 | 12 | 9.9 | 1 |
| SVL 250 | 250 | 618 | 513 | 68 | 330 | 140 | 66 | 944 | 279 | 234 | 12 | 13.3 | 1 |
| SVL 315 | 315 | 746 | 668 | 78 | 395 | 197 | 66 | 1135 | 354 | 314 | 12 | 23 | 1 |